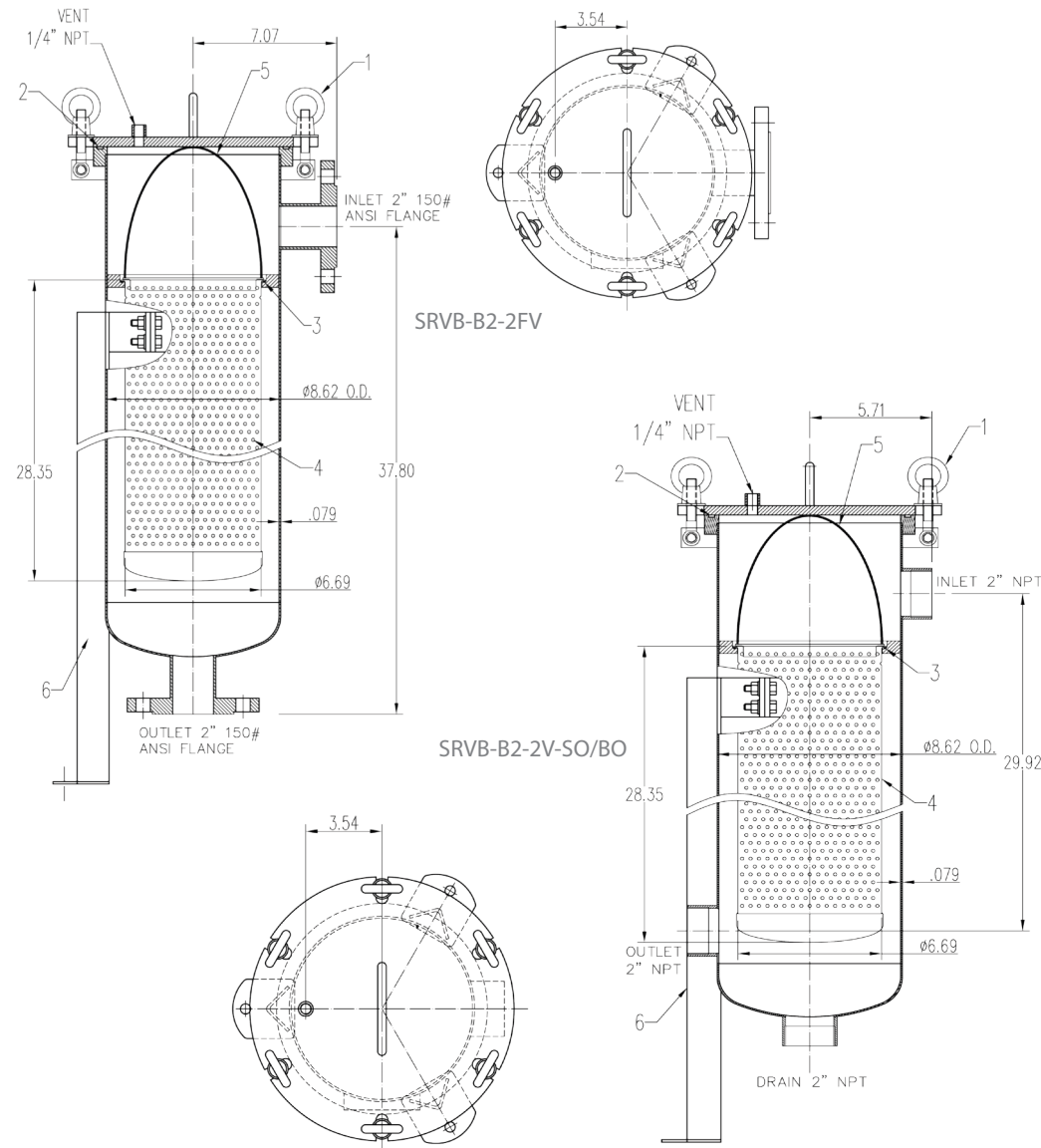


The SRVB Value Design vessels provide economical filtration of a wide variety of liquids in a lightweight, externally polished stainless steel design, with features including a swing bolt secured, quick opening cover and an internal positive pressure bag hold-down device. The SRVB vessels accommodate one standard #2 bag. These vessels are manufactured from polished and passivated 304 stainless steel and rated for 150 psi (10.3 bar). For added corrosion resistance, all cover bolt and leg mounting hardware is made from stainless steel as well.

SRVB multi-bag vessels accommodate four or six standard #2 bags. These vessels are manufactured from polished and passivated 304 stainless steel and rated for 150 psi (10.3 bar).

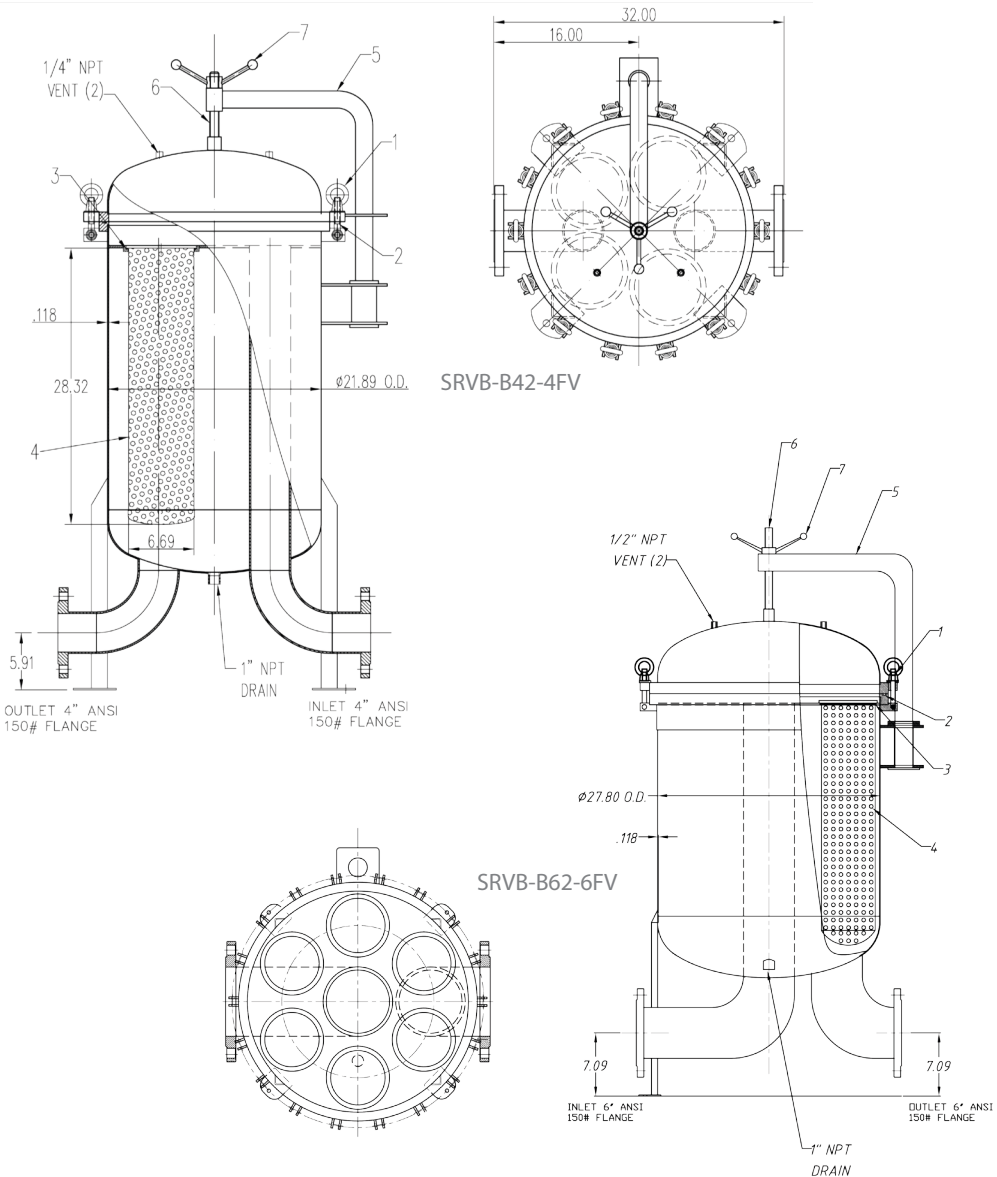


NEED ELEMENTS FOR YOUR VESSEL?
The following are most commonly used with the SRVB line:
MADD-MAXX—PAGES 74-95 FILTER BAGS—PAGES 98-123
As always, discuss your options with your local sales representative to find the best fit for your application.

ORDER GUIDE



Table with specifications for SRVB SINGLE BAG, SRVB MULTI-BAG, and SRVB SINGLE & MULTI-BAG, including pressure, temperature, and material details.



ORDER OPTIONS

Table with 2 columns: Option Name and Description, covering VESSEL, MATERIAL, BAG COUNT, BAG SIZE, INLET/OUTLET, O-RING, and DUAL SIDE OUT/BOTTOM OUT options.

This is not a comprehensive list. We can build your vessel to suit your specifications. Call one of our customer service representatives for pricing and availability.